

BottleJaw in the Goat

Written by Administrator-GL
Saturday, 26 May 2007

Severe Intermandibular Edema

Seemingly healthy goat with good appetite continually gets thin and unthrifty - is anemic and begins to show signs of bottle jaw..Why?

Well there are a few reasons for this to happen..

Copper deficiency,

Coccidiosis,

Bracken fern poisoning,

Inadequate protein synthesis due to liver damage,

Mycotoxins (a toxin produced by an organism of the fungus family, which includes mushrooms, molds and yeasts.)

Stomach worms especially **Barberpole worm** (*Haemonchus contortus*),

Johnes Disease,

Liver Fluke all can cause bottle jaw in the goat:

Animal ID: CU Misc

Species: Goat

Tissue: Head, Jaw, Intermandibular Space

Morphologic DX: Severe intermandibular edema

Etiologic DX: ACUTE HEMONCHOSIS

Lesion or DX Name: Bottlejaw

Lesion Description: Soft fluctuant mass of the intermandibular space. The ventral curve of this animal's jaw region is because of marked subcutaneous edema in this region.

Remarks: In many instances, when anemia is seen in sheep and goats, acutely and severely, it is often due to *Haemonchus contortus*, the large stomach worm (barber pole worm). The parasites cause the lesion as a result of hypoproteinemia as they destroy the blood in the abomasum. It should also be noted that many times "rats leave the sinking ship" so to speak, and so the worms leave the abomasum and they will disintegrate in the small intestine from the change in pH from acid to base. Thus, in some cases of acute severe hemonchosis, one may not find any parasites in the abomasum or small intestine which caused the disease, because they were destroyed. Many sheep do have a few hemonchus in the abomasum, but without anemia it should probably not be called hemonchosis, a disease caused by hemonchus. At a later date, though, this may be true and proper treatment used.

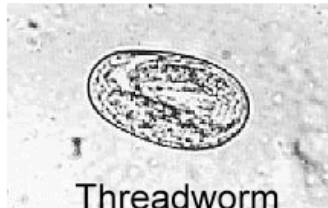
© Cornell Veterinary Medicine

BottleJaw in the Goat

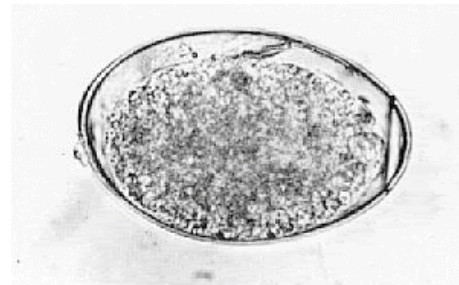
Photo of the most common internal parasite eggs viewed under microscope for fecal exam Articles, Goat Health, BottleJaw, Severe Intermandibular Edema, Copper deficiency, Coccidiosis, Bracken fern poisoning, Inadequate protein synthesis due to liver damage, Barberpole worm, Stomach worms of the goat, Liver Fluke, ACUTE HEMONCHOSIS, barber pole worm, hypoproteinemia, Famacha Eye color chart, coccidiosis, goat Haemonchus contortus, Seemingly healthy goat with good appetite continually gets thin and unthrifty - is anemic and begins to show signs of bottle jaw. Copper deficiency, Coccidiosis, Bracken fern poisoning, Inadequate protein synthesis due to liver damage, Mycotoxins (a toxin produced by an organism of the fungus family, which includes mushrooms, molds and yeasts.) Stomach worms especially Barberpole worm (Haemonchus contortus) and Liver Fluke all can cause bottle jaw in the goat.



Barberpole

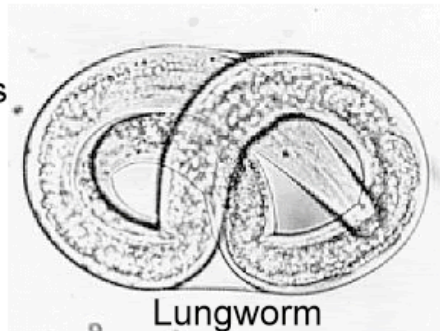


Threadworm



Liver Fluke

5 common
nematode eggs
found in a
fecal exam



Lungworm

